

Partner With Us

Sponsorship Opportunities



.....

Consider a one-time or recurring contributions to support essential services to youth.



The Matthews House

Overnight & Day Shelter:
814 E. 16th St., Loveland



Shining the Light

ON YOUTH HOMELESSNESS

Homelessness Surrounds Us

In Northern Colorado, there are currently **1,600 youth experiencing homelessness**, of which 400 are traveling alone without parents or guardians.

It Only Takes 48 Hours...

According to the National Sexual Violence Resource Center, **one in three teens on the street will be lured into prostitution** within 48 hours of leaving home.

The Cycle Continues...

Studies show that **85% of homeless youth have histories of family poverty**, and many of them continue to struggle with poverty into adulthood.



The Matthews House Needs Your Help!

WE INVITE YOU TO JOIN US IN CREATING A SUSTAINABLE FUTURE FOR OUR SHELTER.



At The Matthews House, The Landing is a vital space where we offer support and hope to youth and families in need.

While we are not conducting a capital campaign, **your sponsorship will directly contribute to the ongoing operation and maintenance of our shelter**, ensuring that we can continue to provide essential services and a safe, nurturing environment.

Consider leaving your mark on The Landing with our diverse sponsorship opportunities.

Each sponsorship not only helps sustain our facility but also provides a chance to make a lasting impact that our community will remember for years to come.

We are deeply grateful for your interest in and support of our mission. Together, with care and compassion, we grow and thrive.



Your generosity will do more than support our immediate needs; it will help build a resilient future for the youth and families we serve.

Shelter Naming Rights



We encourage you to choose one naming opportunity to allow as many donors as possible to participate (except for bricks, stones, and plaques—a maximum of two per family).

Rooms & Spaces	Amount
Dormitory Hall	\$20,000
Community Kitchen & Pantry - RESERVED BY NUTRIEN	\$25,000
Overnight Rooms (8 available)	\$25,000
Nurse & Medical Office	\$28,000
Classroom	\$32,000
De-Stress Spaces	\$5,000
Dining Room	\$75,000
Drop In Resource Room	\$100,000
Bricks Laid at The Landing - Unlimited	\$1,000
Vestibule	\$25,000
Intake Office	\$30,000
Bench (4 available)	\$5,000



THE LANDING | OPENING FALL 2024

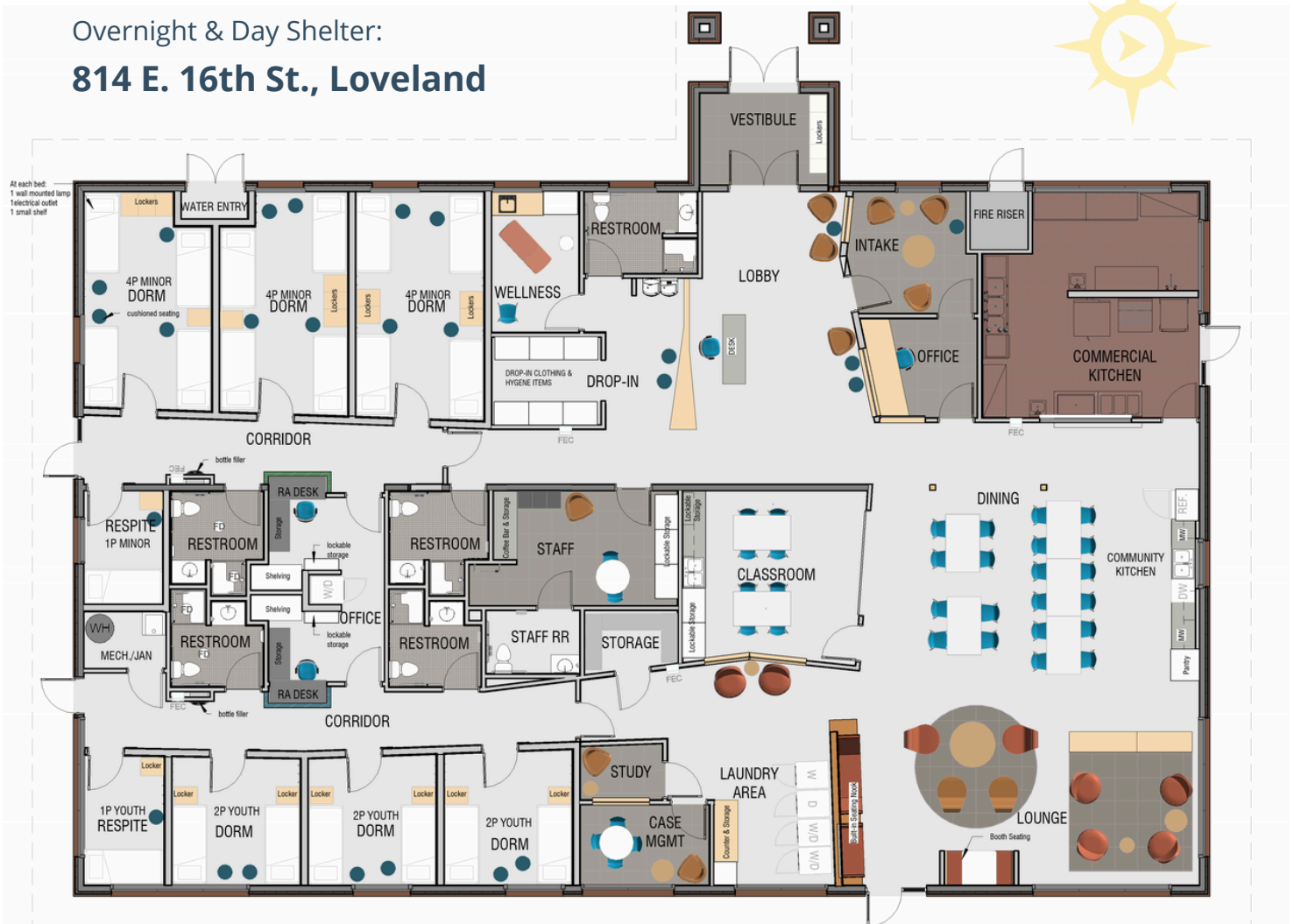
Floor Plan

FOR THE LANDING

To view a **VIDEO TOUR**, scan the QR code.



Overnight & Day Shelter:
814 E. 16th St., Loveland



COMMUNITY KITCHEN



DORMITORY HALL



LAUNDRY



DORM ROOM



Public Naming Sponsorship INCLUDES

2025 Cultivate Hope Annual Gala
RECOGNITION

You will enjoy **2 complimentary tickets** (\$5,000 sponsorships) **OR a full table** (for \$10,000 sponsorships or above) to our **2025 Cultivate Hope Gala**.

We invite you to be in attendance and enjoy our 20th Anniversary Event as we will be acknowledging all public shelter sponsors!

REFER TO PAGE 2 TO FURTHER REVIEW NAMING OPPORTUNITIES.



Tangible Partnerships

Rooms & Spaces	Amount
Dormitory Furniture	\$37,000
Trees (10 available)	\$5,000
Artwork/Murals	\$10,000
Youth Success Team Member (20 available)	\$500,000
Building Sponsor -- RESERVED TSD	\$2,000,000



YOUR DONATION QUALIFIES FOR THE CHILD CARE CONTRIBUTION TAX CREDIT*

Private donors, as well as business contributions to The Landing, qualify for the Child Care Contribution Tax Credit.

In addition to the applicable Federal and State income tax deductions, **the credit provides a 50% state tax credit.**

This credit allows businesses and individuals to claim a state income tax credit of up to \$100,000 per year for their contributions to promote child care in Colorado.



- Gifts of \$250 or more qualify.
- Non-monetary gifts do not qualify.
- Payroll deductions apply only if the company provides required documentation.
- The credit allowed shall not exceed \$100,000 per year.
- The credit allowed shall not exceed the tax liability for the year.
- Any excess credits may be carried forward for up to five years.

*The Matthews House is not liable for qualification; please contact your personal tax preparer for more information.

Your total contribution must be received by The Matthews House by December 31 to apply for the current year's tax return.

Shelter Naming

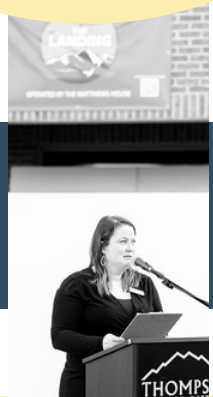
GUIDELINES

When naming a part of The Landing building, a corporate or family name (and the appropriateness of it in a public context) will be taken into consideration.

All potential names will be approved by the Executive Director and Board of Directors before placement.



Monetary gifts and donations toward naming rights for any part of the facility must be paid in full within 3 years unless a longer period for payment of the gift or pledge is approved.



Name Change

OR REMOVAL

Post-Naming of the Landing



If and when circumstances change substantially, and if the continued use of an approved name may negatively impact the reputation of The Landing, the Executive Director will consult with The Matthews House Board of Directors regarding further action.

The Matthews House reserves the right to remove any name that would reflect poorly on the organization.

A name in recognition of a charitable gift may be removed at the discretion of the Executive Director if and when the financial commitment is unfulfilled by the donor.

The donor will be notified of the change in writing 60 days prior to the removal of their name. If a donor wishes to change the name on their signage due to a company rebrand, change in marital status, etc., the name can be changed at the request and expense of the donor.

The removal of a name requires the approval of the Board of Directors.